

Outline of the geology of the Golfo Dulce region (Costa Rica) and its surroundings in Central America

Vista de conjunto de la geología de la región del Golfo Dulce (Costa Rica) y de sus inmediaciones en América Central

Otto MALZER & Markus FIEBIG

Abstract: This article is a brief review of the present knowledge on the Costa Rican geology. In the first chapter of this paper the main structural elements of the Central American land corridor are described. The second chapter focuses on the Golfo Dulce region and the area around the research station La Gamba. A short introduction to the regional geology is given and will help to understand the rocks and structures in the area. This work is meant to be a basis of and supplement to the wealth of biological scientific research carried out at the Tropical Field Station La Gamba.

Key words: Geological history, Geomorphology, La Gamba, Golfo Dulce, Central America, Costa Rica.

Resumen: Este artículo es una breve revisión del actual conocimiento sobre la geología de Costa Rica. En el primer capítulo de este trabajo se describen los elementos estructurales principales del corredor terrestre de América Central. El segundo capítulo se centra en la región de Golfo Dulce y en los alrededores de la estación de investigación La Gamba. Se entrega una breve introducción a la geología regional que ayudaría a comprender la estructura y las rocas de la area. Este trabajo está considerado como una base y complemento a la riqueza de investigaciones científicas biológicas llevadas a cabo en la Estación de Campo Tropical La Gamba.

Palabras clave: Geología histórica, geomorfología, La Gamba, Golfo Dulce, América Central, Costa Rica.

Introduction

Central America forms a land bridge between the two American continents. The sedimentary and structural history of Central America has been investigated intensively in the last decades and an impressive list of publications (e.g. DENYER & KUSSMAUL 2003, DENYER et al. 2003, MALZER 2001), including some general tectonic, geomorphologic and geologic maps (DENYER et al., 2003) is available. This statement is also valid for Costa Rica as a whole and to a somewhat more limited degree to the Golfo Dulce region. Here, and in particular in the area of the biological research station “La Gamba”, detailed geological work is still rare (e.g. SCHEUCHER et al., this volume; FIEBIG et al. 2007; BOSSEW et. al, in this volume). Further studies of local geoscientific problems, like the exact nature of Quaternary infill in young sedimentary basins are still necessary.

This article gives a brief summary of the geomorphologic development of Central America on the whole, of Costa Rica in detail, and an introductory overview of the Golfo Dulce Region.

Short overview of the tectonic structure and development of Central America

At an average distance of 100 km from the Pacific coast, a deep ocean trench with water depths between 3.000 and more than 5.000 metres is situated. This Middle America Trench (Fig. 1) marks the border between the North American, the Caribbean and the South American Plates in the north-east and the Pacific Cocos and Nazca Plates in the south-west. The trench is the morphological expression of a subduction zone in the earth's interior. In subduction zones, oceanic plates descend into the mantle of the earth. At the Middle America Trench, Pacific plates subduct under the American plate system.

The Central American landmass is structurally subdivided into several tectonic blocks. The Maya block in the north, comprising southern Mexico, the Yucatán peninsula and most of Guatemala, is part of the North American Plate. The Chortis block, Chorotega- and Choco blocks, adjoining southward, form the Central American land bridge. The boundary between the

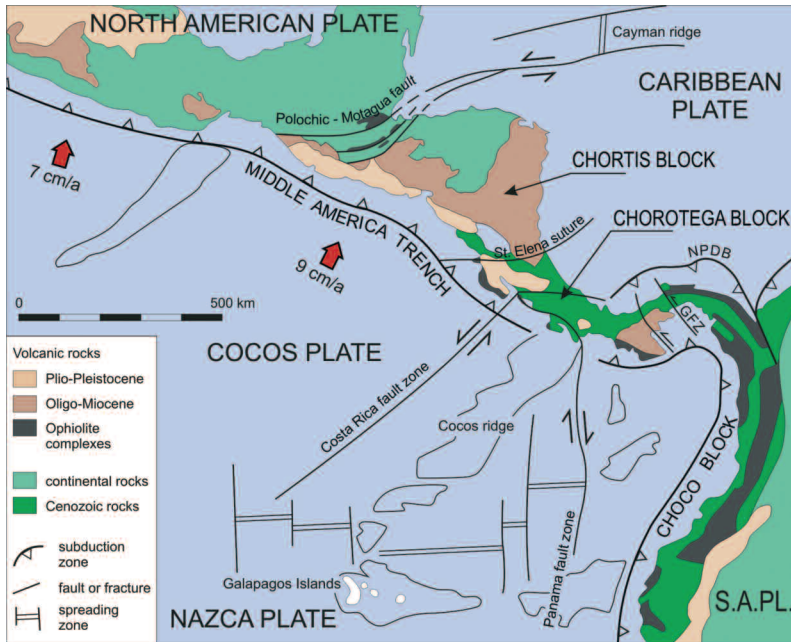


Fig. 1: Plate tectonics of Central America (modified after BERRAGE & THORPE 1988, MALZER 2001). The complex tectonic situation of the Central American land bridge is explained in the text. Active subduction (e.g. in the Middle America Trench) and ocean floor spreading (between the Nazca and Cocos plates) cause very active geological processes on land (volcanism, earthquakes, land slides etc.).

North American Plate and the Chortis block is the transcurrent Polochic-Motagua Fault System. In the Caribbean Sea, the Cayman Trench is the continuation of this fault system and splits the Caribbean Plate from the North American Plate. The Costa Rica Fault Zone (CRFZ) and the Panama Fault Zone (PFZ) are important structural elements in the Pacific Ocean floor and on the Central American land bridge. The PFZ is the boundary between the oceanic Cocos and Nazca plates. In the southern part of Costa Rica, the PFZ splits into branches which control to a large extent the topography of the Golfo Dulce region.

The structural element which was crucial for the uplift and eventually the closure of the entire Central American land bridge is the Cocos ridge. It is nowadays an aseismic feature (no appreciable recent seismic or volcanic activity). Its width ranges from 200 to 300 km and the top of the ridge is up to 2.500 m higher than the surrounding Pacific Ocean floor. The Cocos ridge strikes SW-NE and represents the trace of the Galapagos hotspot below the moving Pacific Plate (RANERO & v. HUENE 2000), a feature similar to the Hawaiian island chain. It consists of thick oceanic crust (basaltic lavas) and appears to interrupt the Middle America Trench.

The Gatun Fracture Zone (G.F.Z. in Fig. 1) is the boundary between the Chorotega and the Choco block and simultaneously the eastern limit of the so-called

Costa Rica – Panama Microplate. This microplate was formed during the Miocene collision of Central America with the South American plate. It is bounded by the North Panama Deformed Belt (NPDB) in the north, the Middle America Trench in the south and the Panama and Costa Rica fault zones in the west.

Geological history and present-day configuration

The history of Central America begins with the fragmentation of the Pangaea super-continent in the Middle Jurassic. The opening of the North and later the Central Atlantic Ocean started about 160 million years (Ma) ago, resulting in the separation of North and South America around 120 Ma. The intrusion of large volumes of basaltic lava formed a plateau of oceanic crust where North and South America drifted apart (130-80 Ma). Afterwards, possibly as a consequence of the opening of the South Atlantic in Late Cretaceous, the stress regime between the two American plates changed from dilatation to compression. On land, the Santa Elena Suture (Fig. 1) resulted from these compressive forces. Also around 80 Ma, subduction of the eastern Pacific Ocean floor under a newly formed Caribbean Plate started. Subduction and related plate movement also triggered the formation of the transcurrent Polochic-Motagua Fault System. Along this fault system, present-day Honduras, southern Guatemala and northern Nicaragua were split off from the North American plate, rotated around the Maya Block and moved eastwards into their present position. This rotated land-mass forms the northern part of the Central American land bridge and is called Chortis block. As a former part of the North American continent, this block possesses a metamorphic basement of Precambrian to Paleozoic age. Due to the rigid continental crust, the Chortis block displays intensive faulting and lateral shifting along NE-SW structures. Surface features like mountain ranges and basins follow the NE-SW trend.

Also after 80 Ma, intensive volcanism along the subduction zone has formed an island arc, which is now the backbone of the Central American land bridge, the Chorotega block. This block comprises the south of Nicaragua, Costa Rica and western Panama. It does not have a continental basement like the Chortis block but consists of Mesozoic oceanic lavas with interspersed deep-sea sediments (radiolarites, cherts, shales). Apart from these basaltic and rhyolitic rock masses, some mafic and granitoid intrusions exist (e.g. Cerro Chirripo in the Sierra Talamanca). During the Tertiary, 40-6 Ma, the basement was largely covered by shallow marine sediments deposited in backarc, forearc and short-lived inter-insular basins. The sediments generally contain some volcanic material.

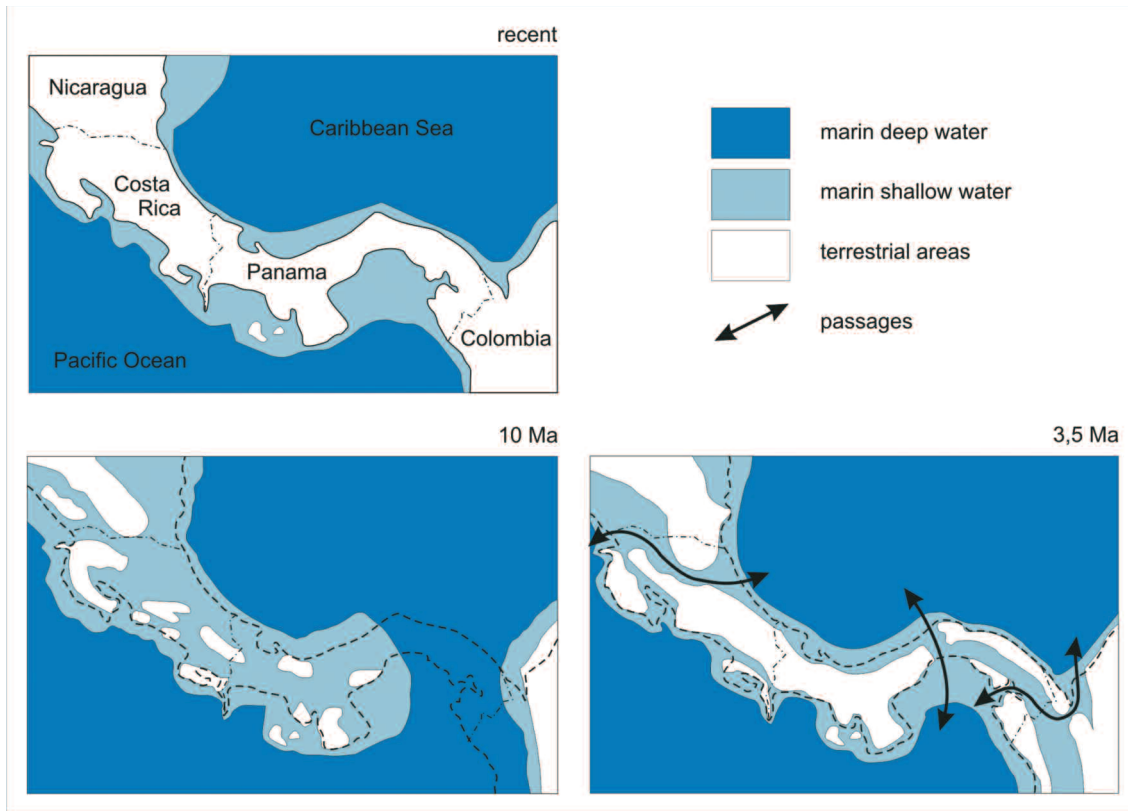


Fig. 2: The closure of the Central American Seaway (modified after DENYER et al. 2003) started during the late Miocene. When the closure was finished is still a subject of scientific discussions. Most probably the onset of migration of land mammals around 2.7 Ma marks the final closure.

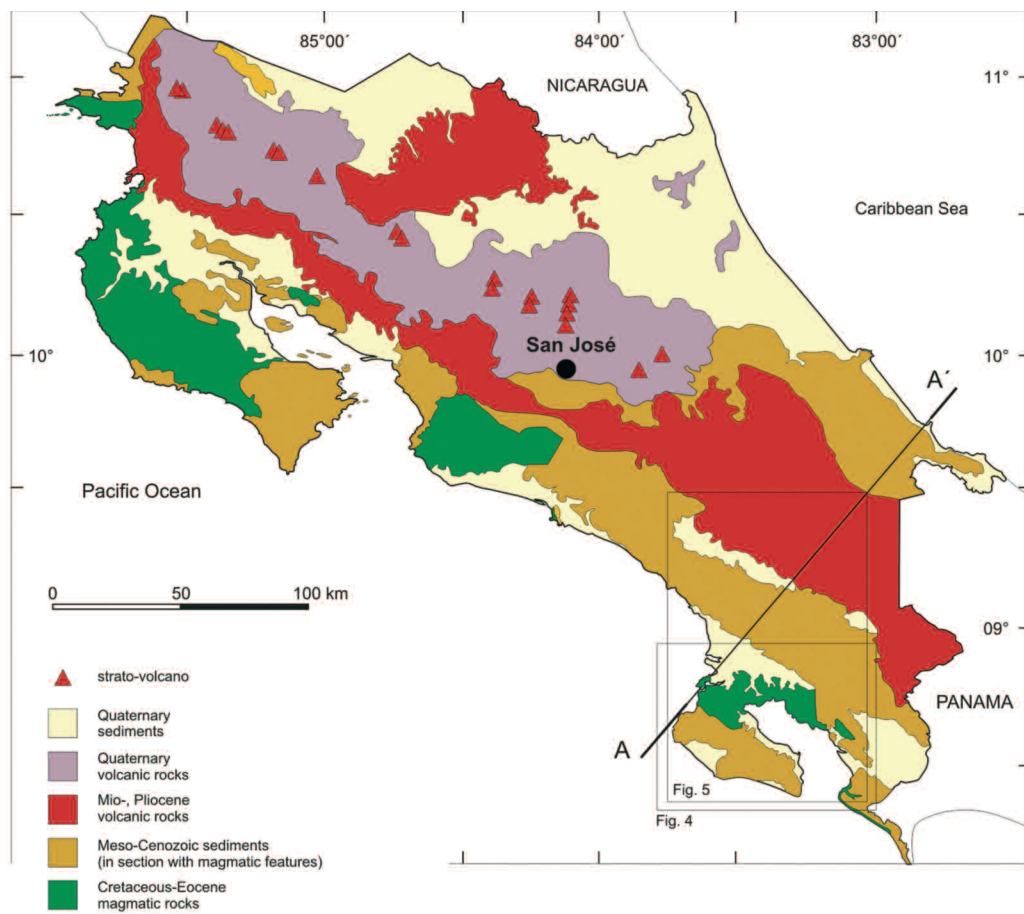
Around 6 Ma, the Cocos ridge reached the Middle American Trench. The subsequent shallow subduction under the Caribbean plate caused folding and inversion of the southern Costa Rican forearc (today the Fila Costena) and backarc (today the Caribbean coast S of Puerto Limon) basin and rapid uplift. The subducting Cocos Ridge has also sealed this area from ascending magma and thus caused the conspicuous gap in the line of active volcanoes in southern Costa Rica.

The Choco block underwent a different tectonic development. In the late Miocene (around 13 Ma), the South American plate started to move against the Panamanian isthmus. The resulting compressive force has formed the North Panama Deformed Belt and has gradually created a stable island chain – here without the aid of a central volcanic range.

At some time between 3.6 Ma (HAUG & TIEDEMANN 1998, COATES et al. 1992) and 2.5 Ma (e. g. BARTOLI et al. 2005) this movement of southern America, assisted by the subduction of the Cocos ridge, almost completely closed the seaways between the Pacific and Atlantic Oceans (Fig. 2). Only after this closure, the development of the phenomenon of “El Nino” and other ocean surface circulation regimes which resulted in an intensification of the Northern Atlantic thermohaline circulation, was possible (HAUG et al. 2001, 2005, but RAVELO et al. 2004). A connection with the onset of northern hemisphere glaciation is discussed (BARTOLI et al. 2005).

Finally from 2.7 Ma, migration of land mammals started on a large scale (more than the “island bouncing” over the proto-Antilles, indicated since the Late Cretaceous). Especially during the glacial periods of the Pleistocene, when relatively arid, savannah-like habitats may have prevailed on the elevated parts of the land bridge and new lowland areas emerged because of sea level drop, northern land plants found favourable conditions for southward expansion. Examples for megafauna immigrants are mastodons, horses, elephants and other fossil species (ALVARADO 1994). In the latest part of the Pleistocene, modern man reached Central America coming from Asia, probably over the dry Bering Strait and through the then thawing North America.

During the Quaternary (2.5 Ma-Recent), large volumes of terrestrial sediments accumulated in the lowlands of Costa Rica (Fig. 3). Frequent volcanic eruptions of different types (Plinian, phreatomagmatic etc.) occurred during the Quaternary, producing thick pyroclastic sheets and other volcanic deposits (ALVARADO & SALANI 2004). Large landslides of avalanche-type debris occurred within the volcanic and sedimentary ranges. Offshore, in front of the Pacific coast, large quantities of sediment were deposited. Large submarine earthquakes triggered during the Quaternary and continuing today trigger tsunamis along the coast of Central America. (ALVARADO et al. 2004).



Section A-A'

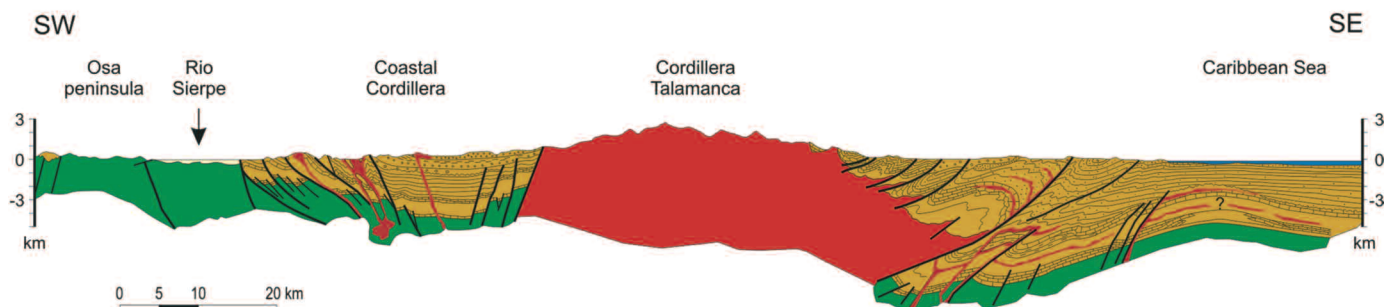


Fig. 3: Geological map of Costa Rica with section (modified after DENYER et al. 2003). The map is divided into general units, each representing chronologically and lithologically related rock-sequences in the field. In the section, the backbone of the Central American land bridge consisting of Cretaceous to Eocene magmatites and Mio-cene-Pliocene volcanites is very conspicuous. – The map illustrates the widespread coverage by young sediments and volcanites.

The land bridge of Central America, however, increases its area not only by sedimentation but equally through ongoing tectonic movements. In 1991, one earthquake lifted 75 ha of reef surface over the sea level on the Caribbean coast near Cahuita.

Global sea level oscillations, as a consequence of the waxing and waning of the Pleistocene northern hemi-

sphere ice sheets also significantly changed the coastlines of Central America. During interglacial sea level maxima, some of the ancient seaways of the Tertiary may have been temporarily reopened (e.g. the Rio San Juan valley on the border between Nicaragua and Costa Rica).

Pleistocene glaciations in Central America are documented by glacial landforms and deposits in the

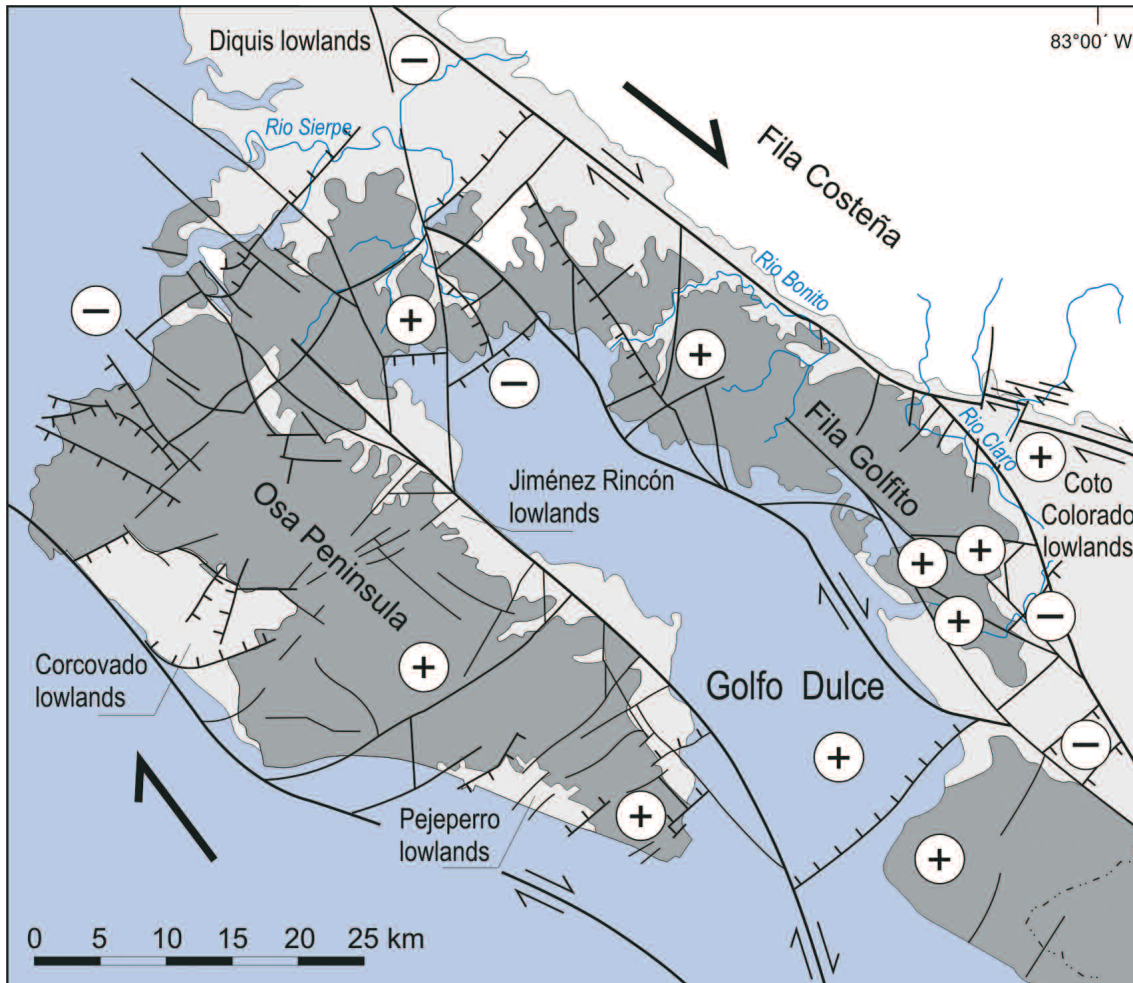
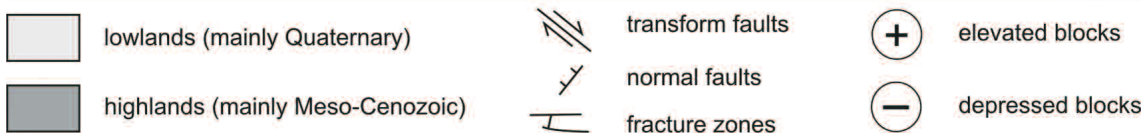


Fig. 4: Structural map of the Golfo Dulce region (modified after MALZER 2001). Several NW-SE striking transform faults dominate the general structure of the region, for example the subdivision into Fila Golfito, Golfo Dulce and the Osa Peninsula. Uplift or depression of singular blocks is additionally controlled by NE-SW striking secondary faults. Several river valleys, topographic situations and geological borders orientate as well on the underlying fault and fracture system.



Chirripo massive of southeastern Costa Rica. In the Valle de las Morrenas, there are traces of valley glaciers at least 4.6 km long (ORVIS & HORN 1999). Altogether, about 70 square kilometres were glaciated in the Chirripo massif. Stable snowfields may have persisted above 3.300 m in the Cordillera de Talamanca, Cerro de la Muerte, Chirripo and Kamuk and on high volcanoes like Irazu (LACHNIET & VAZQUEZ-SELEM 2005).

Geology of the Golfo Dulce Region and the environs of La Gamba

The geographical limits of the Golfo Dulce Region are the Fila Costeña in the northeast, the Rio Sierpe in the northwest, the Pacific Ocean to the west and south and the Rio Colorado to the east (Fig. 4 + 5). The main topographic elements are the deeply incised valleys and hills of the Fila Golfito (highest point 579 m), the Golfo Dulce basin and the Osa Peninsula (highest elevation 782 m). The marine inlet of the Golfo Dulce (GD) measures approximately 55 × 12 km. The shape is controlled by north-west-trending on-land extensions of the Panama Fracture Zone and their north-east-striking secondaries. A sill only 60 m deep forms the entrance in the south-east and limits water exchange between the 185-210 m deep gulf and the open Pacific. This restricted entrance has caused slightly anoxic conditions in the

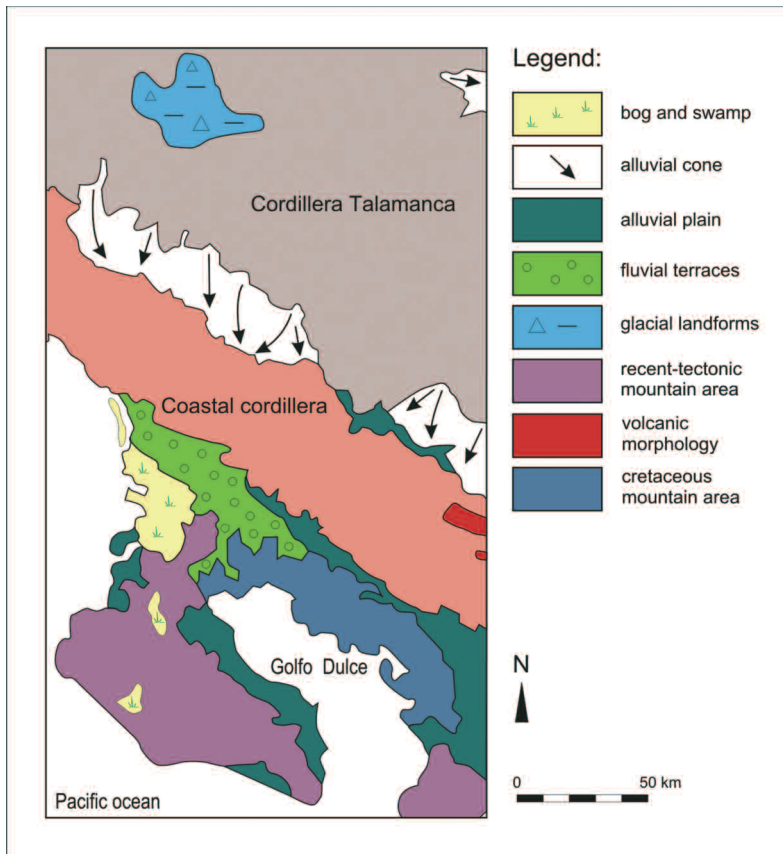


Fig. 5: Geomorphology of the Golfo Dulce Region (modified after SALZAR MONDRAGON 2000). Glacial landforms developed in the past only in high lying parts of the Cordillera Talamanca. Fluvial terraces are widely spread in the Diquis lowlands (compare Fig. 4). While alluvial cones are found along the mountain ranges, alluvial planes and bogs form mainly coastal areas. Especially the Osa Peninsula is subject to intensive recent uplift and mountain building. The diverse geomorphology of the Golfo Dulce Region reflects the active geological processes on the Central American land bridge.

inlet. Bottom sediments are mainly turbidites, which enter the gulf via permanent channels in the sea floor. A number of small reefs flank the northeast coast between the Rio Esquinas mouth and the town of Golfito. The NW-trending Esquinas Fault (or Ballena – Celmira Fracture Zone (BCFZ) separates the Golfo Dulce region from the mainland. BCFZ and the equally NW-trending continuation of the Panama fracture zone and their NNE-SSW striking secondaries dominate the structure and morphology of the region. Fig. 4 provides an overview of the tectonic structure.

The Golfo Dulce region can be subdivided into three Pacific “terraces” (DI MARCO et al. 1995). Based on palaeomagnetic data, these terranes have been accreted to the Central American volcanic arc during the subduction of the Cocos Plate. The Golfito Terrane (GT) is situated in the north-east and the Rincon Block (RB) surrounds the Golfo Dulce. Both are composed of basaltic rocks and associated deep sea sediments. The Osa-Cano Accretionary Complex (OCAC) is situated on the external side of the Osa Peninsula.

The Osa-Cano Accretionary Complex has an age range from Late Cretaceous to Miocene (approx. 80-15 Ma). Rare sediment inclusions in basalts of the Rincon Block are Late Cretaceous to Eocene in age. The oldest sequence on the Golfito Terrane is latest Campanian (± 80 Ma), the second and the lower part of the youngest sequence belong into the Maastrichtian (± 68 Ma). The highest part of the Golfito Terrane sequence probably reaches up into the Paleocene in age. It carries sediments derived from an acidic (explosive) volcanism at its top.

An additional time constraint is provided by unconformable Pliocene sediment layers on top of the Osa-Cano Complex and of larger parts of the Rincon Block basalts on the Osa Peninsula. The Pliocene is only covered by Pleistocene sediments in large valleys and on the north coast of the Osa Peninsula. Such a young cover is missing in the north coast of the Golfo Dulce.

Overall, two fundamental periods of the structural development can be distinguished: an older pre-Cocos Ridge period (80-6 Ma) and a younger period characterised by the arrival, impact and shallow subduction of the Cocos Ridge (6 Ma-Recent).

The environs of La Gamba and the research station

About 3 km west of the “La Gamba” research station, a north-south striking steep fault separates the Golfito Terrane (GT) from the Rincon Block (RB). The village of La Gamba and the research station are situated on the Golfito Terrane which, as mentioned before, is composed of three stratigraphic units. It begins at the base with oceanic basalts and dolerites, followed by pelagic deep sea carbonates and fine clastics and is topped by a volcanoclastic complex. The deepest unit is mainly exposed along the coast of the Golfo Dulce (GD). The two higher parts adjoin to the north and west. The research station and the nearby Esquinas Lodge are located on the highest and probably youngest sequence, composed of light green, weathered whitish, tuffaceous silt to mudstones. Because of dense vegetation and deep weathering, hard rock exposures are limited to river and road cuts and landslide sites.

The Rincon Block frames the Golfo Dulce basin on the north-west, west and south-west and includes the upper reaches of Rio Bonito and Quebrada Sardinal. It is characterised by a thick, uniform series of oceanic, tholeiitic basalts with scarce intercalations of deep sea limestone and radiolarite. In this unit, pillow basalts, which are typical for submarine magma flows, have been described (BERRANGE & THORPE 1988). Due to the greater resistance of these rocks to weathering and ero-

sion, this terrane is more rugged and contains the highest elevations north of the Golfo Dulce basin (over 550 m). The basalt series of the RB are covered by younger sediments on the north flank of the Osa Peninsula. The steep, NW-SE striking fault boundary of the Rincon Block is exposed in several narrow valleys of north-flowing small rivers. South of this almost vertical fault, a very different sedimentary series, the Osa-Cano Accretionary Complex (OCAC), forms the central part and the Pacific flank of the peninsula. This complex represents (after DI MARCO et al. 1995) a melange of volcanoclastic matrix with embedded components with sizes from centimetres to hundreds of meters. Basalt blocks, deep sea limestone and chert, but also carbonates of shallow water origin are redeposited in this deep-sea unit. Good rock exposures are mainly along the Pacific coast and on the bottom of some interior valleys. Over most of the peninsula, except the northernmost corner, the strata of the Osa-Cano complex are overlain discordantly by young, fluvial to marine (turbiditic) clastics of the Pliocene Osa-Group. Along the north and northeast coast and in small, down-faulted basins (Laguna Corcovado, Laguna Pejeperro), poorly consolidated fine clastics of the Pleistocene Puerto Jimenez Group have been deposited. Basal conglomerates of the Osa Group are gold bearing. These placer-gold deposits are subject to numerous small gold mining operations.

According to ANCHUKATIS & HORN (2005) and BEHLING (2000), at least three eruptions of the Baru Volcano (NW Panama) have happened in the past 3.000 years (1440, 1080, 610 a. cal. BP = 500, 900 and 1350 A.D.). The evidence stems from lake drillings in Costa Rica and Panama. FIEBIG et al. (2007) found young and unweathered volcanic ash minerals in surface soils around La Gamba. These minerals do not derive from the local subsurface but are wind blown exactly from Baru. An influence of this sub-recent volcanic activity of Baru on soil fertility, vegetation and possibly population density around La Gamba is likely. Pollen and charcoal evidence shows that southwestern Costa Rica has been occupied and its nature disturbed by humans for over 3.000 years (CLEMENT & HORN 2001: 425). After 2.500 years of varying (but generally increasing) human colonisation and intensity of forest clearing and burning, the post-Columbian population declined after 1500 A.D., enabling the forest to regenerate.

Conclusion

There is considerable information about the geology and geomorphology of Central America and Costa Rica available, but, as mentioned before, further studies on the local Quaternary history still need to be done.

This future research work would provide a complement to the wealth of biological scientific research carried out at the La Gamba Station.

Acknowledgement

Many thanks to Helene Pfalz-Schwingenschlögl for the performance of the drawings!

References

- ALVARADO G. (1994). Historia natural antigua: los intercambios biológicos interamericanos. — Ed. Tecnológica de Costa Rica, Cartago.
- ALVARADO G. & F. SALANI (2004). Tefrostratigrafía (40 000 – 2 000 a.P.) en el sector caribe de los volcanes Barva, Congo y Hule, Cordillera Central Costa Rica. — *Revista Geologica de America Central* **30**: 59-72.
- ALVARADO G., VEGA E., CHAVES J. & M. VASQUEZ (2004): Los grandes deslizamientos (volcanicos y no volcanicos) de tipo debris avalanche en Costa Rica. — *Revista Geologica de America Central* **30**: 83-99.
- ANCHUKATIS K. & S. HORN (2005): A 2 000 year reconstruction of forest disturbance from southern Costa Rica. — *Palaeogeography, Palaeoclimatology, Palaeoecology* **221**: 35-54.
- BARTOLI G., SARNTHEIN M., WEINELT M., ERLKENKEUSER H., GARBE-SCHOENBERG D. & W. LEA (2005): Final closure of Panama and the onset of northern hemisphere glaciation. — *Earth and Planetary Science Letters* **237**: 33-44.
- BEHLING H. (2000): A 2860-year high-resolution pollen and charcoal record from the Cordillera de Talamanca in Panama: a history of human and volcanic disturbance. — *The Holocene* **10** (3): 387-393.
- BERRANGE J. & R. THORPE (1988): The geology, geochemistry and emplacement of the Cretaceous Tertiary ophiolitic Nicoya complex of the Osa Peninsula. — *Tectonophysics* **147**: 193-220.
- BOSSEW P., HUBMER A. & F. STREBL (2008): Anthropogenic and natural radionuclides in soil of a tropical rainforest of Southern Costa Rica. — In this volume.
- CLEMENT R. & S. HORN (2001): Pre-Columbian land-use in Costa Rica: a 3000-year record of forest clearance, agriculture and fires from Laguna Zoncho. — *The Holocene* **11** (4): 419-426.
- COATES A., JACKSON J., COLLINS L., CRONIN T., DOWSETT H., BYBELL L., JUNG P. & J. OBANDO (1992): Closure of the isthmus of Panama: The near-shore marine record of Costa Rica and western Panama. — *Geol. Soc. Amer. Bull.* **104**: 814-828.
- DENYER P. & S. KUSSMAUL (2003): Geologia de Costa Rica. Instituto Tecnológica de Costa Rica. — Cartago.
- DENYER P., MONTERO W. & G. ALVARADO (2003): Atlas tectónico de Costa Rica. — Editorial de la Universidad de Costa Rica, San Jose.
- DI MARCO G., BAUMGARTNER J. & J. CHANNEL (1995): Late Cretaceous-Early Tertiary paleomagnetic data and a revised tectonostratigraphic subdivision of Costa Rica and western Panama. — *Geol. Soc. Amer. Special Paper* **295**: 1-27.
- FIEBIG M., HRACHOWITZ M., KUGLER H., MENTLER A., OTTNER F., PAMPERL S., SIEGHARDT M. & W. BLUM (2007): Soil properties and distribution of radionuclides of selected soil profiles from Southern Costa Rica. — *N. Jb. Geol. Paläont.* **24**: 27-41.

- HAUG G., GANOPOLSKI A. & D.E.A. SIGMAN (2005): North Pacific seasonality and the glaciation of North America 2.7 million years ago. — *Nature* **433**: 821-825.
- HAUG G. & R. TIEDEMANN (1998): Effect of the formation of the Isthmus of Panama on Atlantic Ocean thermohaline circulation. — *Nature* **393** (18 June): 673-676.
- HAUG G., TIEDEMANN R., ZAHN R. & C. RAVELO (2001): Role of Panama uplift on oceanic freshwater balance. — *Geology* **29** (3): 207-210.
- HORN S.P. (1990): Timing of glaciation in the Cordillera de Talamanca, Costa Rica. — *Climate Res.* **1**: 81-83.
- LACHNIET M. & L. VAZQUEZ-SELEM (2005): Last Glacial Maximum equilibrium line altitudes in the circum-Caribbean (Mexico, Guatemala, Costa Rica, Columbia and Venezuela). — *Quaternary International*: 138-139, 129-144.
- MALZER O. (2001): Geological History of Central America and the Golfo Dulce Region. — *Stapfia* **78**: 34-46.
- ORVIS K. & S. HORN (2000): Quaternary Glaciers and Climate on Cerro Chirripo, Costa Rica. *Quaternary Research* **54**: 24-37.
- RANERO C.R. & R. V. HUENE (2000). Subduction erosion along the Central America convergent margin. — *Nature* **404**: 748-752.
- RAVELO C., ANDREASEN D., LYLE M., LYLE A. & M. WARA (2004): Regional climate shifts caused by gradual global colling in the Pliocene epoch. — *Nature* **429**: 263-267.
- SALAZAR MONDRAGON L. (2003): Geomorfologia. — In: DENYER P. & S. KUSSMAUL (eds), *Geologia de Costa Rica*. Editorial Tecnológico de Costa Rica, Cartago.
- SCHEUCHER L., VORTISCH A. & L. LAGUNA-MORALES (2008): Geological and mineralogical investigations of the lithologies and their weathering products in a study area south-west of the field station "La Gamba", Golfo Dulce, Costa Rica. — this volume.

Addresses of authors:

Otto MALZER
 Seyringerstr. 3
 A-2243 Matzen, Austria
 E-mail: iomalzer@tele2.at

Markus FIEBIG
 Department of Structural
 Engineering + Natural Hazards
 University of Natural Resources and
 Applied Life Sciences Vienna
 Peter Jordan-Straße 70
 A-1190 Vienna, Austria
 E-mail: markus.fiebig@boku.ac.at

Contents/Indice

Prefaces and introduction — Prólogos y introducción

Dr. Pedro LEON Coordinator, President Aria's Initiative on Peace with Nature	11
O. Univ.-Prof. Dr. Georg WINKLER Rector of the University Vienna	12
Dr. Josef PÜHRINGER Governor of Upper Austria	13
Introduction Introducción	14

ABIOTIC ASPECTS — FACTORES ABIÓTICOS

Geography — Geografía

Geography of the Golfo Dulce region (survey) Geografía de la región del Golfo Dulce (sinopsis) WEISSENHOFER A., HUBER W. & KLINGLER M.	19
--	----

Geology — Geología

Outline of the geology of the Golfo Dulce Region (Costa Rica) and its surroundings in Central America (survey) Vista de conjunto de la geología de la Región del Golfo Dulce (Costa Rica) y de sus inmediaciones en América Central (sinopsis) MALZER O. & FIEBIG M.	23
Geological and mineralogical investigations of the lithologies and their weathering products in a study area south-west of the field station "La Gamba", Golfo Dulce, Costa Rica Investigación geológica y mineralógica de las rocas y sus productos de meteorización, en un área al suroeste de la estación "La Gamba", Golfo Dulce, Costa Rica SCHEUCHER L.E.A., VORTISCH W. & LAGUNA-MORALES J.	31
Anthropogenic and natural radionuclides in soil of a tropical rainforest of Southern Costa Rica Radionúclidos antropogénicos y naturales en el suelo de un bosque lluvioso tropical del sur de Costa Rica BOSSEW P., HUBMER A. & STREBL F.	47

Climate — Clima

The climate of the Esquinas rainforest (survey) El clima del bosque lluvioso Esquinas (sinopsis) WEISSENHOFER A. & HUBER W.	59
---	----

PLANT BIOLOGY — BIOLOGÍA DE PLANTAS

Ecosystems and vegetation — Ecosistemas y vegetación

Ecosystem diversity in the Piedras Blancas National Park and adjacent areas (Costa Rica), with the first vegetation map of the area

Diversidad de ecosistemas en el Parque Nacional Piedras Blancas y áreas adyacentes (Costa Rica), con la primera presentación de una mapa vegetacional

WEISSENHOFER A., HUBER W., KOUKAL T., IMMITZER M., SCHEMBERA E., SONTAG S., ZAMORA N. & WEBER A. 65

Plant diversity — Diversidad de plantas

Plant diversity and biogeography of the Golfo Dulce region, Costa Rica (survey)

Diversidad vegetal y biogeografía de la región de Golfo Dulce, Costa Rica (sinopsis)

HUBER W., WEISSENHOFER A., ZAMORA N. & WEBER A. 97

Alien plants and invasion patterns in different habitats of the Golfo Dulce area, Costa Rica

Plantas exóticas y patrones de invasión en diferentes hábitat del área de Golfo Dulce, Costa Rica

HUBER W., WEISSENHOFER A. & ESSL F. 105

Survey of Rubiaceae in the Golfo Dulce area, Costa Rica:
New species, combinations and name changes since 2001

Investigaciones en Rubiaceae en el área de Golfo Dulce, Costa Rica:
nuevas especies, combinaciones y cambios de nombre desde 2001

WILL S. & KIEHN M. 111

Medicinal plants in La Gamba and in the Esquinas rain forest

Plantas medicinales en La Gamba y de la selva tropical Esquinas

LÄNGER R. 121

Life forms — Formas de vida vegetal

Plant life forms in the Golfo Dulce region and other neotropical rainforests (survey)

Formas de vida vegetal en la región de Golfo Dulce y en otros bosques lluviosos neotropicales (sinopsis)

HIEZ P. 129

Terrestrial litter trappers in the Golfo Dulce region: diversity, architecture and ecology of a poorly known group of plant specialists

Plantas captadoras de hojarasca en la región de Golfo Dulce: diversidad, arquitectura y ecología de un grupo de plantas especialistas poco conocido

WEISSENHOFER A., HUBER W., WANEK W. & WEBER A. 143

Ecophysiology — Ecofisiología

Primary production and nutrient cycling in lowland rainforests of the Golfo Dulce region

Producción primaria y ciclo de nutrientes en bosques lluviosos de tierras bajas de la región de Golfo Dulce

WANEK W., DRAGE S., HINKO N., HOFHANSL F., PÖLZ E.-M., RATZER A. & RICHTER A. 155

Fungi and lichens — Hongos y líquenes

Diversity and ecology of fungi in the Golfo Dulce region (survey)

Diversidad y ecología de hongos en la región del Golfo Dulce (sinopsis)

PIEPENBRING M. & RUIZ-BOYER A.

179

The lichens of the Golfo Dulce region (survey)

Líquenes de la región de Golfo Dulce (sinopsis)

BREUSS O.

193

ANIMAL BIOLOGY — BIOLOGÍA DE ANIMALES

Spiders — Arañas

Cupiennius (Araneae, Ctenidae): Biology and sensory ecology of a model Spider

Cupiennius (Araneae, Ctenidae): Biología y ecología sensorica de una araña modelo

BARTH F.G.

211

Key to the genus *Cupiennius* (Araneae, Ctenidae)

Clave de determinación de genus *Cupiennius* (Araneae, Ctenidae)

BARTH F.G. & CORDES D.

225

Insects — Insectos

Diversity, biogeography and ecology of insects in the Pacific lowlands of Costa Rica, with emphasis on La Gamba (survey)

Diversidad, biogeografía y ecología de los insectos en las tierras bajas del Pacífico de Costa Rica con énfasis en La Gamba (sinopsis)

SCHULZE C.H.

229

Banderillas: Effects of deforestation on dragonflies (Insecta, Odonata) in the Pacific lowland of Costa Rica

Banderillas: Efectos de la deforestación sobre libélulas (Insecta, Odonata) en la tierra baja Pacífica en Costa Rica

HOFHANSL F.P. & SCHNEEWEIFS S.

237

Longhorn beetles (Coleoptera, Cerambycidae) of the Golfo Dulce region, Costa Rica

Cerambícidos (Coleoptera, Cerambycidae) de la región de Golfo Dulce, Costa Rica

HUBWEBER L.

249

Diversity of Euglossini (Hymenoptera, Apidae) in primary and secondary lowland rainforests in south-western Costa Rica

Diversidad de Euglossini (Hymenoptera, Apidae) en bosques lluviosos de tierras bajas primarios y secundarios en el sudoeste de Costa Rica

GRUBER M.H., MORAWETZ L. & WIEMERS M.

257

Stingless bees of the Golfo Dulce region, Costa Rica (Hymenoptera, Apidae, Apinae, Meliponini)

Las abejas sin aguijón de la región de Golfo Dulce, Costa Rica (Hymenoptera, Apidae, Apinae, Meliponini)

JARAU S. & BARTH F.G.

267

Butterfly diversity of the Piedras Blancas National Park and its vicinity –
a preliminary assessment (Lepidoptera: Papilionidae & Hesperioidea)

Diversidad de mariposas del Parque Nacional Piedras Blancas y zonas cercanas –
una evaluación preliminar (Lepidoptera: Papilionidae & Hesperioidea)

WIEMERS M. & FIEDLER K.

277

Feeding behaviours of neotropical butterflies (Lepidoptera, Papilionoidea)

Ingestión de alimentos en mariposas neotropicales (Lepidoptera, Papilionoidea)

KRENN H.W.

295

Amphibians and reptiles — Anfibios y reptiles

The amphibians and reptiles of the Golfo Dulce region (survey)

Los anfibios y reptiles de la región del Golfo Dulce (sinopsis)

HÖBEL G.

305

Plasticity and geographic variation in the reproductive ecology of gladiator frogs,
particularly *Hypsiboas rosenbergi*

Plasticidad y variación geográfica en la ecología reproductiva de ranas gladiatoras, especialmente *Hypsiboas rosenbergi*

HÖBEL G.

329

Reproductive behaviour of the glass frog *Hyalinobatrachium valerioi*

(Anura: Centrolenidae) at the tropical stream Quebrada Negra (La Gamba, Costa Rica)

Comportamiento reproductivo de la rana de cristal *Hyalinobatrachium valerioi* (Anura: Centrolenidae)
en el arroyo tropical Quebrada Negra (La Gamba, Costa Rica)

VOCKENHUBER E.A., HÖDL W. & KARPEN U.

335

Birds — Aves

Birds of La Gamba – a call for research and scientific collaboration

Aves de La Gamba – un llamado para investigación y colaboración científica

AUBRECHT G. & SCHULZE C.H.

349

The birds of La Gamba (survey)

Los pajaros de La Gamba (sinopsis)

TEBB G.

353

Habia atrimaxillaris (Dwight & Griscom) 1924 – the black-cheeked ant-tanager.

History of an endemic bird species from SW Costa Rica, from discovery to endangered status

Habia atrimaxillaris (Dwight & Griscom) 1924 – tangara hormiguera cabecinegra.

Historia de una especie de ave endémica del Sudoeste de Costa Rica – desde su descubrimiento a su estatus de peligro

AUBRECHT G.

381

Bird assemblages of forested and human-modified countryside habitats
in the Pacific lowlands of southern Costa Rica

Grupos de aves de hábitat boscosos y rurales en las tierras bajas del Pacífico del sur de Costa Rica

SCHULZE C.H. & RIEDL I.

395

Mammals — Mamíferos

Mammals of the Piedras Blancas National Park, Costa Rica: species composition, habitat associations and efficiency of research methods – a preliminary overview (survey)

Mamíferos del Parque Nacional Piedras Blancas, Costa Rica: composición de especies, asociaciones de hábitat y eficiencia de métodos de investigación – una panorámica preliminar (sinopsis)

LANDMANN A., WALDER C., VORAUER A. & EMSER T.

409

Bats of the La Gamba region, Esquinas rain forest, Costa Rica: species diversity, guild structure and niche segregation

Murciélagos de la región de La Gamba, bosque lluvioso Esquinas, Costa Rica: diversidad específica, estructura gremial y segregación de nichos

LANDMANN A., WALDER C., VORAUER A., BOHN S. & WEINBEER M.

423

Limnology — Limnología

The river network of the Piedras Blancas National Park, Costa Rica (survey)

La red fluvial del Parque Nacional Piedras Blancas, Costa Rica (sinopsis)

TSCHELAUT J., PICHLER C., WEISSENHOFER A. & SCHIEMER F.

441

Macroinvertebrates and leaf litter decomposition in a neotropical lowland stream, Quebrada Negra, Costa Rica

Macroinvertebrados y descomposición de residuos de hojas en un curso de agua de tierras bajas neotropical, Quebrada Negra, Costa Rica

TSCHELAUT J., WEISSENHOFER A. & SCHIEMER F.

457

The role of leaf anatomy and tannins in litter decay in a tropical stream

El rol de la anatomía foliar y de los taninos en la descomposición de la hojarasca en un arroyo tropical

RIEMERTH A., GUSENLEITNER M. & SCHIEMER F.

467

Freshwater bryozoans in La Gamba (Costa Rica: Piedras Blancas National Park): a general introduction

Briozoos de agua dulce en La Gamba (Costa Rica: Parque Nacional Piedras Blancas): una introducción

WÖSS E.R.

485

Ecology of fishes of Quebrada Negra, Costa Rica, a first order neotropical lowland stream

Ecología de los peces de Quebrada Negra, Costa Rica, río neotropical de primer orden de tierras bajas

PICHLER C. & SCHIEMER F.

495

PLANT-ANIMAL INTERACTIONS — INTERACCIONES DE PLANTAS Y ANIMALES

Pollination — Polinización

Pollination in the plants of the Golfo Dulce area (survey)

Polinización en las plantas del área de Golfo Dulce (sinopsis)

WEBER A.

509

Phenology and pollination of *Ceiba pentandra* (Bombacaceae) in the wet forest of south-eastern Costa Rica

Fenología y biología de la polinización de *Ceiba pentandra* (Bombacaceae) en el bosque húmedo del sudeste de Costa Rica

ROJAS-SANDOVAL J., BUDDE K., FERNÁNDEZ M., CHACÓN E., QUESADA M. & LOBO J.A.

539

Phenology of tree species of the Osa Peninsula and Golfo Dulce region, Costa Rica

Fenología de especies de árboles de la Península de Osa y la región de Golfo Dulce, Costa Rica

LOBO J., AGUILAR R., CHACÓN E. & FUCHS E.

547

Style release experiments in four species of Marantaceae from the Golfo Dulce area, Costa Rica

Experimentos acerca de la sensibilidad del estilo en cuatro especies de marantáceas del área del Golfo Dulce, Costa Rica

CLASSEN-BOCKHOFF R. & HELLER A.

557

Notes on the pollination of the perfume flowers of *Gloxinia perennis* (Gesneriaceae) by euglossine bees

Notas sobre la polinización de las flores perfumadas de *Gloxinia perennis* (Gesneriaceae) por abejas euglossine

WITSCHNIG G., HICKL C. & WEBER A.

573

Scientific work of Austrian students in the “Austrian rainforest” (Piedras Blancas National Park, Costa Rica), with special regard to pollination studies

Trabajo científico de los estudiantes en el “Bosque lluvioso de los Austriacos”

(Parque Nacional Piedras Blancas, Costa Rica), con especial consideración en los estudios de polinización

WEBER A.

579

Ants and plants — Hormigas y plantas

A house in the tropics: full pension for ants in *Piper* plants

Una casa en el tropico: pensión completa para hormigas en plantas de *Piper*

FISCHER R. & MAYER V.

589

Does nectar production reduce herbivore pressure on *Passiflora* species (Passifloraceae) in a tropical rainforest in Costa Rica?

Puede la producción de néctar reducir la presión de herbivoría en especies de *Passiflora* (Passifloraceae) en un bosque tropical de Costa Rica?

THURNER M. & MAYER V.

599

HUMAN ASPECTS — ASPECTOS HUMANOS

History and development — Historia y desarrollo

Indigenous societies of the south east of Costa Rica, 15th century

Sociedades indígenas del sudeste de Costa Rica, siglo XVI

BARRANTES CARTÍN C.

609

The stone balls of Palmar

Las esferas de piedra de Palmar

STEPHENS C.

631

Impacts of the United Fruit Company in Southwest Costa Rica Impacto de la United Fruit Company en el Suroeste de Costa Rica STEPHENS C.	635
---	-----

Corcovado National Park – almost a banana plantation El Parque Nacional Corcovado – casi una plantación bananera STEPHENS C.	645
--	-----

Case study: economic and structural settlement changes and their consequences in the community of La Gamba, Golfo Dulce region Estudio de caso: Cambios estructurales y económicos de la población y sus consecuencias en la comunidad La Gamba, región del Golfo Dulce KLINGLER M.	649
---	-----

History of nature exploration — Historia de exploración de la naturaleza

Un ejemplo de intercambio científico entre Europa y América Latina: las investigaciones de la expedición científica Austríaca en Costa Rica (1930) An example of scientific interchange between Europe and Latin America: The investigations of the Austrian scientific expedition to Costa Rica (1930) DÍAZ BOLAÑOS R.E.	657
---	-----

Otto Porsch and the scientific goals and results of the Austrian Costa Rica expedition 1930 Otto Porsch y los objetivos y resultados científicos de la expedición Austriaco-Costarricense de 1930 WEBER A.	667
--	-----

History of nature conservation — Historia de protección de la naturaleza

Before Corcovado: Early conservation initiatives on the Osa Peninsula (survey) Antes del Corcovado: Primeras iniciativas pro-conservación en la Península de Osa (sinopsis) CHRISTEN C.A.	675
---	-----

Looking back to the foundation of the Corcovado National Park, a crown jewel of nature in Costa Rica Una mirada retrospectiva a la fundación del Parque Nacional Corcovado, una corona de joyas de la naturaleza en Costa Rica UGALDE A.	683
--	-----

In defence of local livelihoods, the forest and the Golfo Dulce: the campaign against “Ston Forestal” in the 1990s and its historical roots En defens de los medios de vida locales, el bosque y el Golfo Dulce: la campaña contra Ston Forestal en los 1990 y sus raíces históricas VAN DEN HOMBERGH H.	693
--	-----

Current conservation projects — Proyectos actuales de protección de la naturaleza

The Osa biological corridor in the context of the mesoamerican biological corridor El corredor biológico Osa en el contexto del corredor biológico mesoamericano GARCÍA R.	701
--	-----

Conectividad entre el Parque Nacional Piedras Blancas y la Fila de Cal

The link between the Piedras Blancas National Park and the Fila de Cal

MORERA C. & ROMERO M.

707

The Biological Corridor Project in the Piedras Blancas National Park, Costa Rica.
A project to preserve the biodiversity by reforestation and alternative culture, with support of the community La Gamba by new marketing strategies

El proyecto de corredor biológico en el Parque Nacional Piedras Blancas, Costa Rica.

Un proyecto para preservar la biodiversidad mediante la reforestación y cultivos alternativos, con el apoyo de la comunidad de la Gamba de nuevas estrategias de comercialización

WEISSENHOFER A., BARQUERO M., HUBER W., MAYER V. & NÁJERA UMAÑA J.

715

Reintroducción de la Lapa Roja (*Ara macao*) en Playa San Josecito, Golfito

Reintroduction of the scarlet macaw (*Ara macao*) to Playa San Josecito, Golfito

VARELA BENAVIDES I. & JANIK D.

725

The project "Rainforest of the Austrians"

El proyecto "Bosque de los Austriacos"

SCHNITZLER M.

733

The "Tropical Research Station La Gamba" –
science, education and nature conservation in Costa Rica

La "Estación Tropical La Gamba" – ciencia, educación y conservación en Costa Rica

ALBERT R. & WEBER A.

739

Ecotourism and local development — Ecoturismo y desarrollo local

Ecotourism in La Gamba. An economical and ecological alternative for the residents of La Gamba?

Ecoturismo en La Gamba. Una alternativa económica y ecológica para los residentes de La Gamba?

FAHRNBERGER M.

743

Sinergias entre ecoturismo y desarrollo local en la península de Osa, Costa Rica

Synergistic effects of ecotourism and local development on the Osa Peninsula, Costa Rica

MORERA C.

755

APPENDIX — APÉNDICE

Authors' addresses

Direcciones de los autores

763

Vegetation map of the Piedras Blancas Nationalpark, Golfito Forest Reserve and adjacent areas

Mapa de vegetación del Parque Nacional Piedras Blancas, Reserva Forestal Golfito y áreas adyacentes